

MICHELIN

X[®] FORCE ZL

X[®] FORCE Z

XZL / XZL+



MICHELIN

X[®] FORCE ZL / X[®] FORCE Z / XZL / XZL+

HIGHLY VERSATILE TO INTERVENE EVEN FASTER IN ALL CONDITIONS



defense.michelingroup.com

SPECIALLY DESIGNED FOR OFF-ROAD VEHICLES THAT DRIVE ON ALL TERRAINS AND REQUIRE MAXIMUM MOBILITY & ROBUSTNESS



SAFETY

- Strength and reliability in all conditions
- Resistance to accidental tears and cuts
- Grip on both dry and wet roads and tracks



VERSATILITY

- Traction in muddy conditions
- Flotation on sand
- Flexibility on/off-road



MOBILITY

- Casing design to operate at various pressures thanks to its compatibility with CTIS
- Handling improved for winter
- Possibility to be studded and chained

YOU DON'T HAVE A CTIS? (CENTRAL TYRE INFLATION SYSTEM)

The Michelin group's TELEFLOW solutions have proven for many years their ability to be integrated on any type of military vehicle. TELEFLOW optimises the vehicle's mobility and thus ensures the safety of units deployed on any type of terrain - road, sand, field, track, mud, etc.

TELEFLOW
CALL OF MOBILITY



teleflow.net/en/military-defense/



1 SHIELD ON SHOULDER

Resistant to cutting in the shoulder area

2 AGGRESSIVE DEEP OPEN TREAD PATTERN

With damage-resistant rubber

3 STRONG SIDEWALL

Designed to operate at various pressures thanks to its compatibility with CTIS



**COMPATIBLE
WITH CTIS**

from

TELEFLOW
CALL OF MOBILITY

FORESTRY



MUD



SAND



GRAVEL



ROCK



ROAD

DRY



ROAD

WET



SNOW

FRESH



SNOW

COMPACTED



ICE



For information purpose only



SAFETY

Run-flat test between MICHELIN® X® FORCE ZL vs MICHELIN® XZL+

+50%⁽¹⁾

km performance for MICHELIN® X® FORCE ZL
vs MICHELIN® XZL+

Run flat test: 3km at 90km/h, 22km at 50km/h and 25km/h until the end of the test



scan me to watch video



VERSATILITY

Resistance to agressions

-25%⁽²⁾

Tread loss weight

Result after 6 runs on rocky slope



scan me to watch video



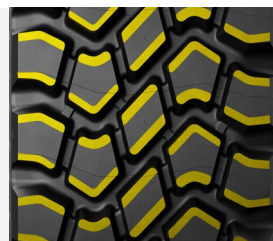
MOBILITY

Winter grip performance

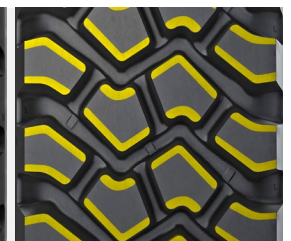
+12.5%⁽³⁾

Longitudinal edges for
MICHELIN® X® FORCE ZL
vs MICHELIN® XZL+

Comparison between the 2 tread pattern designs



14.00 R 20 MICHELIN® X® FORCE ZL 168/165K



14.00 R 20 MICHELIN® XZL+ 164/160J

⁽¹⁾ Conditions: protocol with drilled tyres (not shot) lead in real conditions / Vehicle: Unimog 4x4; Load: 5000 kg; Tested size: 14.00 R 20. Study carried in Fontange - France in December 2021.

⁽²⁾ Conditions: full acceleration on a rocky slope/Vehicle: Unimog 4x4; Load: 5000 kg; Tested size: 14.00 R 20. Study carried in our Michelin Research & Development Centre of Ladoux - France in June 2022.

⁽³⁾ Tested tyres: 14.00 R 20 MICHELIN® X® FORCE ZL 168/165K versus 14.00 R 20 MICHELIN® XZL+ 164/160J

DATASHEET

DESCRIPTION		CAI	MSPN	NOMINAL LOAD PER AXLE (SINGLE TYRE)		NOMINAL LOAD PER AXLE (DUAL TYRE)		NOMINAL SPEED		RECOMMENDED PRESSURE		RECOMMENDED RIM
				KG	LBS	KG	LBS	KM/H	MPH	BAR	PSI	
FLAT EDGE RIM												
255/100 R16	XZL TL 126K	110650	70864	3400	7496	-	-	110	68	4.5	65	6.50H
325/85 R16	X [®] FORCE Z TL 140K	881538	09051	5000	11020	-	-	110	68	5.0	75	9.00
11.00 R16	XZL TL 135K	109142	-	4360	9610	-	-	110	68	5.5	80	6.50H
275/80 R20	X [®] FORCE ZL TL 137/135K MPT	825919	-	4600	10140	8720	19220	110	68	5.5	80	9.00W
335/80 R20	X [®] FORCE ZL TL 150K MPT	420813	25677	6700	14780	-	-	110	68	6.5	94	11.00
365/80 R20	X [®] FORCE ZL TL 158K MPT	892903	59234	8500	18740	-	-	110	68	6.5	94	11.00
	XZL TL 152K MPT	110081	97627	7100	15660	-	-	110	68	6.0	90	11.00
365/85 R20	X [®] FORCE ZL TL 164K	229101	87016	10000	22000	-	-	110	68	7.6	110	10.00W
	XZL TL 164G	109374	56389	10000	22000	-	-	90	55	7.5	116	10.00W
395/85 R20	X [®] FORCE ZL TL 168/165K	364636	91291	11200	24600	20600	45600	110	68	8.6	125	10.00W
	XZL TL 168G	110013	54331	11200	24600	-	-	90	55	8.5	120	10.00W
12.00 R20	XZL TL 154/149K	110132	02383	7500	16540	13000	28640	110	68	8.5	120	8.50
14.00 R20	X [®] FORCE ZL TL 168/165K	249003	38644	11200	24600	20600	45600	110	68	8.6	125	10.00W
	XZL+ TL 164/160J	323281	71701	10000	22000	18000	39680	100	62	7.6	110	10.00W
16.00 R20	X [®] FORCE ZL TL 174/171J	143659	06799	13400	29600	24600	54400	100	62	7.6	110	10.00W
	XZL TL 173/170G	123357	06306	13000	29080	24000	52920	90	55	7.5	110	10.00W
24.00 R21	XZL TL 176G	110257	76025	14200	31400	-	-	90	55	6.0	85	18.00
415/80 R685 TR	X [®] FORCE ZL TL 168K	275224	-	11200	24600	-	-	110	68	8.5	123	230-685TR
DROP CENTRE RIM												
13 R22.5	XZL TL 154/150K	109668	-	7500	16540	13400	29560	110	68	8.0	120	9.00
445/65 R22.5	XZL TL 168G	110142	84103	11200	24600	-	-	90	60	8.0	120	14.00



ON THE WEB

scan me



LINKEDIN

scan me

